

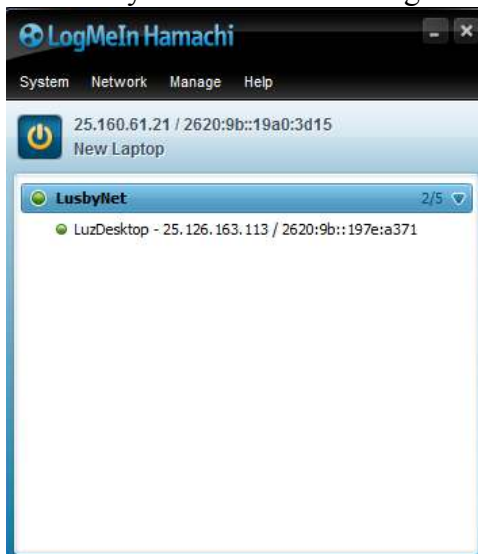
**LogMeIn Hamachi** - is a Virtual Private Network (VPN) connection over the Internet to allow one to access multiple computers within a defined Private Network. What this means is, once you have installed **LogMeIn Hamachi** on all computers and properly set them up in **Your Network**, you can access all of the directories and files on any of those computers. This document is being written to help Customers using RV Park Software that need to run the software from a remote location. For simplicity sake, we will discuss it as though there are only 2 computers that need to be linked, but **Hamachi** (the free version) will allow up to 5 computers to be in the VPN. There are some install instructions with a video on how to install **Hamachi** (<http://www.wikihow.com/Install-LogMeIn-Hamachi>).

We will call the first computer the **Host**, because it has the actual RV Park Software License and "real/actual" Database. The second computer is a **Client** and being networked to the **Host** computer, allows it to use the License and Database of the **Host** computer (which makes it free to use RV Park Software).

We will *ASSUME* RV Park is set up on the **Host** computer and is a Licensed program. Next, using the **Host** computer, you will need to create an Account with **LogMeIn Hamachi** at (<https://secure.logmein.com/>). Just click on the Free option and Access Computers Remotely option. Next fill in the Sign Up panel with your Email password twice and use the Personal account type. This account will initially setup your access to your computers remotely with LogMeIn. LogMeIn lets you access the computer remotely and run it like you are sitting in front of it across the Internet. Later, you will make them available through **Hamachi** in your VPN. Once signed up you will authorize an application to be loaded or installed on your computer.

Once **LogMeIn** is installed, you then need to install and configure **Hamachi**. Go to a **LogMeIn** page that has the "Products" menu on top and "Mouse Over" it to see the products or go (<https://secure.logmein.com/products/hamachi/>). Move down to the **Hamachi** option and pick the Try It Free button. It will install another application for your VPN. I would set the VPN to "Mesh" which allows any connection to get to anything. Once you get everything working, you can adjust your settings to restrict the Hosting computer from getting into your PC (if needed).

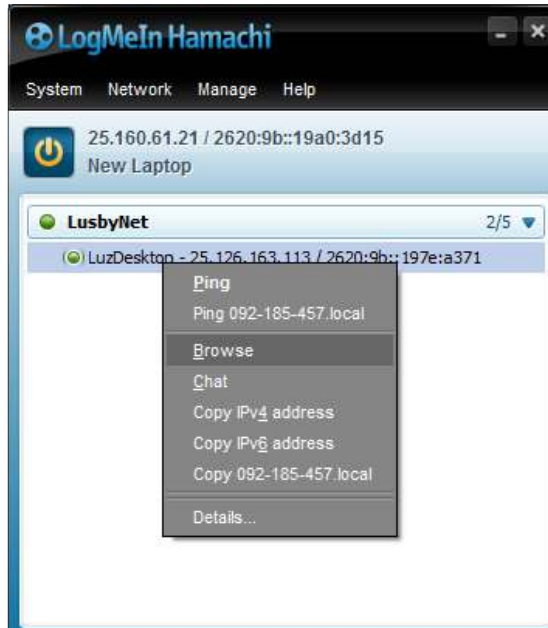
This should provide you with a shortcut to **Hamachi**. Next you need to get on your other PC, we'll call it the Client, and set up it's **LogMeIn** applications similar to the **Host** PC, except you already have an account, so you'll be logging in and adding this PC to your VPN. When I setup my VPN, I named it LusbyNet, so when I click on my **Hamachi** shortcut I get this:



I called my Host computer "LuzDesktop" and my Client computer "New Laptop", which doesn't show on the above list because it is the PC you are on and linking to it would be silly.

Now, you will need to install the Full version of RV Park on your Client computer for this to work. You don't need to setup anything up, so just enter a database password initially (which will actually not be used) and get RV Park to come up.

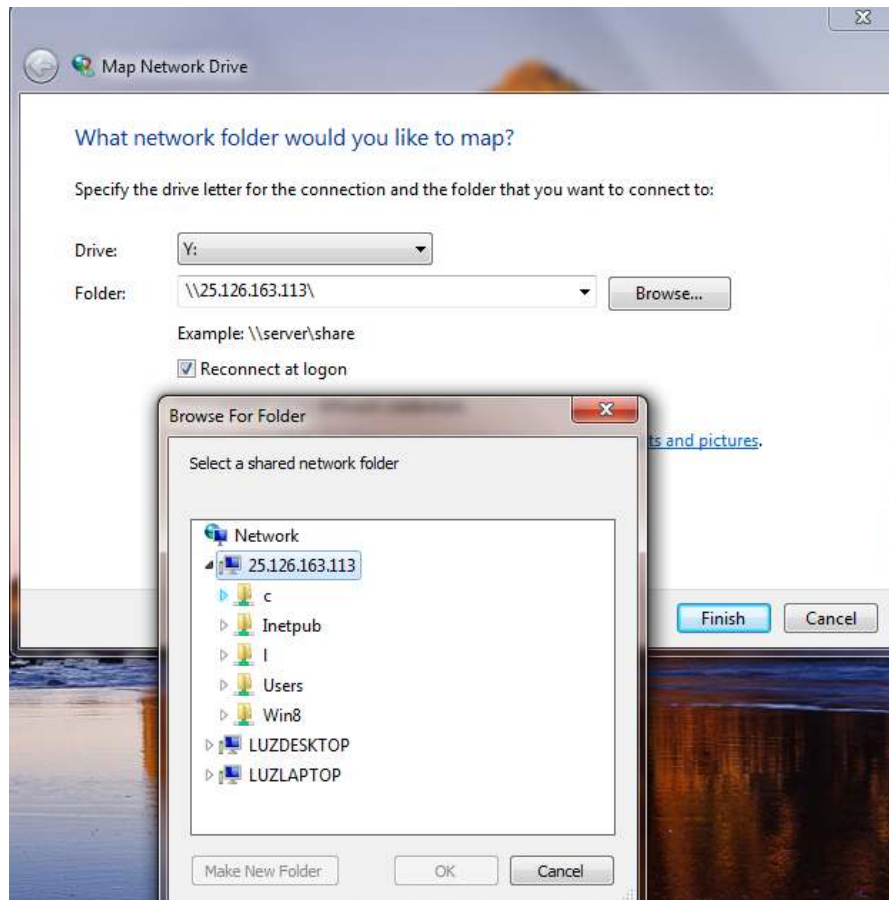
OK, let's set up a Networked Drive for RV Park to use across the internet through [Hamachi](#). Right Click the Host PC's instance in your Network and select Browse:



Doing this will open a Windows Explorer window, showing the [Hamachi](#) network as shown below:

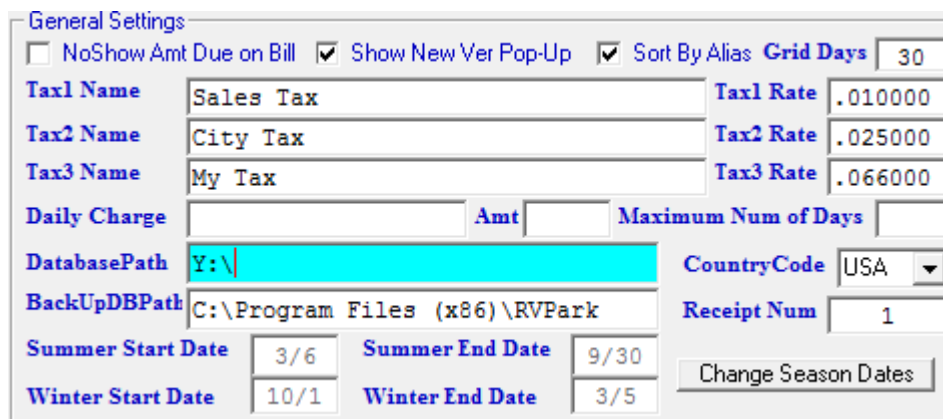


Just select your **Computer** (from the list as shown above) from the List and use the "**Map Network Drive**" option from the menu at the top of the Explorer. Next, you can select an available Drive from the list, enter your Server name (I have used mine) and then **Browse** to locate your RV Park directory, using the small arrows next to the C drive. Make sure the Reconnect at login is checked.



When you finally locate the RV Park directory on the **Host PC**, you need to select that directory on the list and press OK. This will map the Remote PC's directory so you can use it in RV Park's Path for the Database. All that is left is setting the path in RV Park on your Client PC.

Launch RV Park, go to Setup option, then select the 1) Campground Information button. About mid way down on the left side in the General Settings area is the Database Path. Simply enter the new Mapped Drive you have defined (mine was Y:\) as shown below:



Press the Save button and pick No to stay connected and you should be using the License from the Host computer.

Have Fun! You can also connect to the Host Computer and move stuff back and forth as required irrespective to RV Park.

NOTE 1: It is also recommended you install RV Park on the Host computer in it's own Directory from the Root C. Example: [C:\RVPark](#) Normally, RV Park is installed in the Program Files (x86) directory structure (like: [C:\Program Files \(x86\)\RVPark](#)) This will make it easier to "path" to where the databases are plus the Program Files directories are generally more protected..

NOTE 2: You may want to limit access to your Computer and/or the Host computer depending upon your situation. That is, if you have Office Personnel you don't want accessing your computer, you may want to limit or control access by passwords or limit the access to only certain directories. This document assumes you are the only one accessing the Host and Client computers.